

PaintMaster Parking Robotic Line Marker

From Site Capture to Professional Parking Lot Line Marking



www.ineedrobot.eu



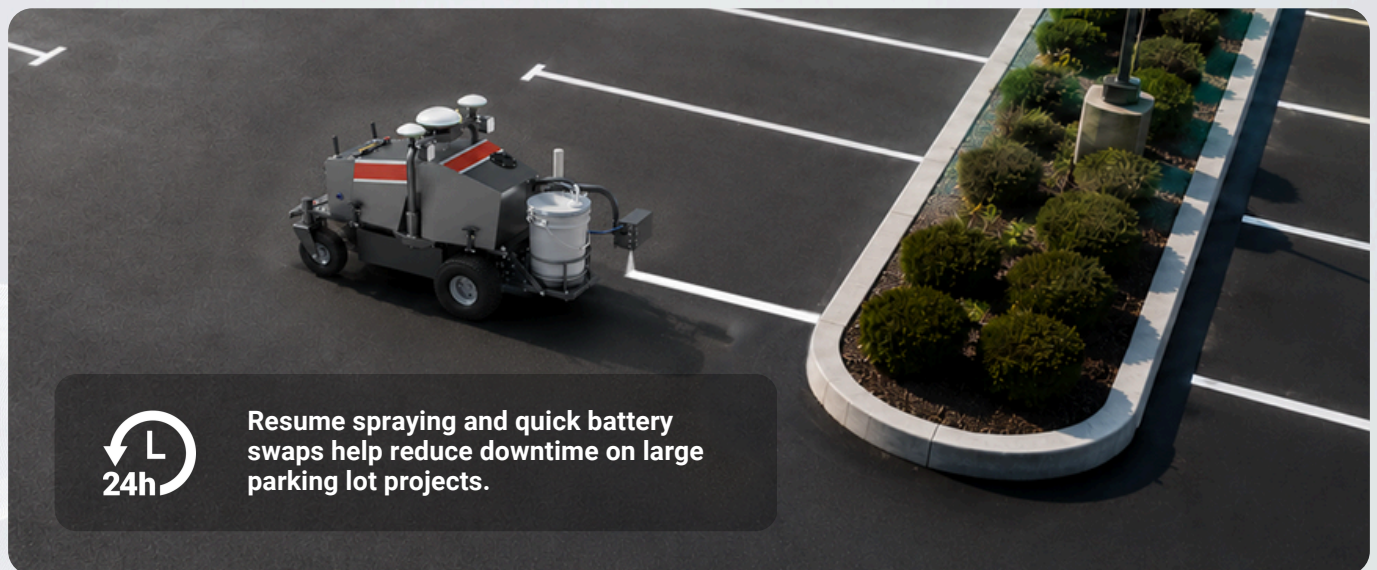
ineedrobot@roboti-adria.eu

FJD PaintMaster Parking is the world's first high-pressure parking lot striping robot built around a fully digital workflow. It combines FJD Trion S2 Max scanner, SiteMind world-model planning, vision-based alignment, and robotic high-pressure striping to support both new layout striping and existing-line repainting. From site capture to final striping, it helps crews reduce manual setup, deploy faster, and deliver more accurate, consistent parking lot markings.

Less Labor. Faster Striping.

Autonomous Marking

Follows planned routes to reduce repetitive manual work on parking lot striping jobs.



Fast Site Capture

Use the FJD Trion S2 Max scanner to capture layout data faster and reduce measuring, pre-marking, and repeated checks.



Fleet Management

Coordinate multiple robots across large parking lots and multi-zone projects.

Built for New Layouts and Existing-Line Repainting



New Layout Striping

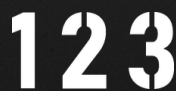
Create parking stalls, arrows, access aisles, no-parking zones, and crosswalks from scanned site data.

Existing-Line Repainting

Use AI vision-based alignment to follow faded line edges, centerlines, arrows, numbers, and parking space boundaries with greater consistency.

Common Parking Layouts

Support standard parking lot layouts for different stall plans and site requirements.

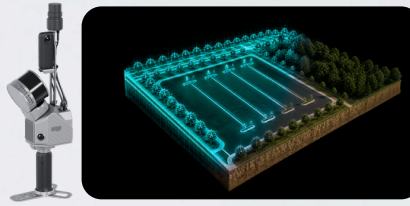


*Templates may be required for special symbols or custom markings.

From Scan to Stripe

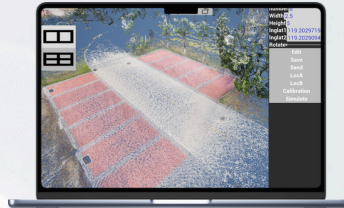
Step 1: Scan

Use the **FJD Trion S2 Max scanner** to capture site geometry, existing lines, obstacles, and surface conditions.



Step 2: Reconstruct

Rebuild markings, parking spaces, arrows, aisles, boundaries, and safety zones in **SiteMind**.



Step 3: Simulate

Check the route, spray sequence, turning space, obstacle avoidance before work starts.



Step 4: Align

Use AI vision-based alignment to follow line edges, centerlines, arrows, numbers, and parking space boundaries on site.



Step 5: Stripe

Apply high-pressure striping for new layouts or repainting tasks with consistent line quality.



Step 6: Complete

Finish the striping task with clean, consistent lines ready for project handover.



Safety, Visibility, and ROI

80%+

Less Labor

5x

Faster Striping

Dual-Layer Safety

360° real-time monitoring and physical collision protection help improve safety in open parking areas.



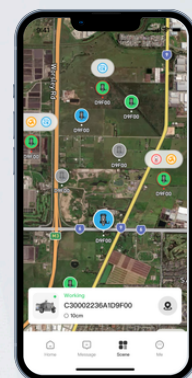
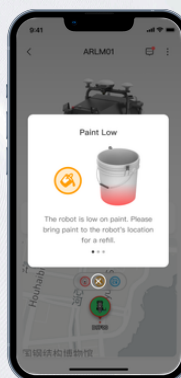
50%+

Lower Maintenance Cost

*Performance may vary by site conditions, layout complexity, crew workflow, and operating environment.

Remote Monitoring

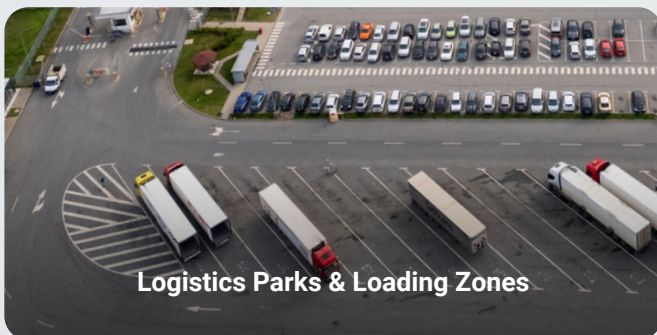
Track machine status, striping progress, and alerts in real time through the app.



Applications



Industrial Parks



Logistics Parks & Loading Zones



Outdoor Parking Lots

Specifications

Complete Unit	
Weight	210 kg (463 lb)
Dimensions	1700 × 1120 × 980 mm (66.93 × 44.09 × 38.58 in.)
Software Updates	OTA
Connectivity	4G, wireless connection
Water Resistance Rating	IPX4
Operating Temperature	5–35 °C

Line Marking System	
Line Width Adjustment Range	10–25 cm (3.94–9.84 in.)
Marking Speed	1–4 km/h
Paint Tank Capacity	19 L (5 gal)
Maximum Flow Rate	2 L/min
Maximum Pressure	20 MPa

Battery & Charging	
Battery Voltage	48 V
Battery Capacity	4 kWh
Runtime	6 h
Charging Time	4 h
Quick-Swap Battery	Supported